

**Delano Joint Union High School District
School Operations & Safety Plan
Under COVID-19
2021-2022
Revised April 19, 2022**



Delano Joint Union High School District
1720 Norwalk St.
Delano, CA 93215

2021-2022

SCHOOL YEAR

Table of Contents

RETURNING TO SCHOOL DURING COVID-19.....	3
FACE COVERINGS & PPE.....	4
IDENTIFICATION AND TRACKING.....	5
POSITIVE CASE ON CAMPUS.....	6
GROUP-TRACING APPROACH FOR STUDENTS.....	6
SCHOOL-BASED EXTRACURRICULAR ACTIVITIES.....	8
STAFF TRAINING AND FAMILY EDUCATION.....	8
ENHANCED DISINFECTION AND CLEANING.....	10
SAFE CONSIDERATIONS FOR STUDENTS WITH DISABILITIES.....	12
MENTAL HEALTH SERVICES.....	13

RETURNING TO SCHOOL DURING COVID-19

HEALTH SCREENING FOR STUDENTS:

Screening at Home:

- The district is directing parents to perform daily symptom assessments (e.g., cough, loss of taste or smell, difficulty breathing) and temperature checks on their students each morning before arriving at school.
- Parents will be advised that students with a temperature of 100.4 or more, students that are feeling sick, and/or students exhibiting any flu-like symptoms will not be allowed to participate in in-person instruction.
- Every student is eligible to receive an FDA approved COVID-19 testing kit to take home.
- Students, parents, and staff will be instructed to visit COVID-19 link on district website for on-going updates and guidance from the California Department of Public Health and Kern County Public Health Department [COVID-19 Updates & Information / DJUHSD COVID19 School Guidance 2021](#)
- Parents will be provided a student return to school affirmation notice that should be signed and returned no later than August 17, 2021. [Student Return to School Affirmation](#)

During School:

- Any student exhibiting symptoms at arrival or while on school grounds will be immediately isolated in the designated isolation area and sent home with parent and/or guardian.
- COVID taskforce at school sites will monitor the implementation of testing and screening during school hours.

ISOLATION ROOM & PROCEDURES

For the protection of all students attending school, it is mandatory to exclude from school any student who has a condition which is suspected of being contagious.

- Students who present with symptoms of illness while they are at school will be accompanied by a staff member to the isolation room to await pick up by a parent or guardian. While in the isolation room, student(s) will be supervised by a COVID Taskforce team member.
- More than one individual can be isolated in a room at a time, maintaining social distancing to the greatest extent possible.
- Parent(s) will have the option to have student complete a COVID-19 test using Valencia Branch Laboratories
- After the isolation room has been used, it will be appropriately disinfected

HEALTH SCREENING FOR STAFF:

- Staff will complete a Return-to-Work Affirmation prior to their first day of in-person instruction
- At any time if an employee has symptoms, they will be sent home
- If the employee requests a test, the district will ensure that a test is completed
- The Human Resource Department will contact the employee and give directions on the rapid COVID-19 testing available
- While waiting for results, staff will self-quarantine at home
- Staff who become symptomatic at work will be tested and immediately sent home

FACE COVERINGS & PPE

In alignment with California Department of Public Health's (CDPH) Guidance for Face Coverings DJUHSD will adhere to the following:

- No student will be prevented from wearing a mask as a condition of participation in an activity or entry into a school, unless wearing a mask would pose a safety hazard (e.g., watersports).
- CDPH strongly recommends that all persons (e.g., students and staff) wear masks in K-12 indoor settings, with consideration of exemptions per [CDPH face mask guidance](#).
- Persons exempted from wearing a face covering due to a medical condition are strongly recommended to wear a non-restrictive alternative, such as a face shield with a drape on the bottom edge, as long as their condition permits it.
- Students and Staff will be provided with disposable 3-ply surgical mask upon request.
- DJUHSD will adhere to the requirements in AB 130 (Chapter 44 of the Statutes of 2021) to offer independent study programs for the 2021-22 school year. [K-12 Guidance 2021-22 School Year \(ca.gov\)](#)
- Some students with disabilities opting to wear a mask may need adult assistance with wearing masks
 - If masks fall off, get wet or dirty, adults will wash their hands before and after they assist students with their masks

Faculty/staff who come into routine contact with others, CDPH recommends the use of the disposable 3-ply surgical masks, which are more effective than cloth face coverings. DJUHSD will also provide N95 masks for those individuals requesting one only after completing required training.

- The school will maintain sufficient disposable masks for those who forget their own
- A face shield with cloth drape will be used in a situation where a face covering cannot be used for pedagogical or developmental reasons
- Signage around campus will remind everyone that facial coverings are strongly recommended.

OTHER ESSENTIAL PROTECTIVE GEAR

- The school will provide gloves whenever needed (e.g., food service, cleaning)

HEALTHY HYGIENE PRACTICES

HANDWASHING

- Teach and reinforce washing hands, avoiding contact with one's eyes, nose, and mouth, and covering coughs and sneezes among students and staff.
- Promote hand washing throughout the day, especially before and after eating, after using the toilet, and after handling garbage, or removing gloves.
- Ensure adequate supplies to support healthy hygiene behaviors, including soap, tissues, no-touch trashcans, face coverings, and hand sanitizers with at least 60 percent ethyl alcohol for staff and children who can safely use hand sanitizer.
- Signage will remind people to frequently wash their hands and offer critical reminders for technique and duration
- Washing stations have been strategically placed around the campus

IDENTIFICATION & TRACING OF CONTACTS

The District Office will maintain communication systems that allow staff and families to self-report symptoms and receive prompt notifications of exposures, while maintaining confidentiality, as required by HIPAA, FERPA and other federal and state laws related to privacy of educational and medical records. There will be a detailed staff training with the District's Director of Special Education, District Nurses, Site Administrators, and the Director of Maintenance & Operations on the above-mentioned practices and procedures prior to the first day of school for all school personnel that will be working on campus, including the school principal/assistant principal, office staff, teachers, SDC aides, and custodians.

- The school nurse will supervise contact tracing within the school community, with support personnel trained as needed to assist with this work. Student and employee privacy will be maintained in compliance with FERPA and HIPPA
- Classrooms will enable rapid generation of potentially exposed individuals for contact tracing
- The school will work to prevent discrimination against students and employees who show symptoms, test positive, and/or may have been exposed to COVID-19
- Information will be readily shared with the county in compliance with the requirements of the Kern County Superintendent of Schools and the Kern County Department of Public Health

DEFINITIONS AND NOTES

Quarantine vs. Isolation

Quarantine keeps someone who has been exposed to the virus away from others. Isolation keeps someone who is **infected with the virus** away from others, even in their home.

Close Contact

Close contact is defined as being within 6 feet of a confirmed COVID-19 person for a cumulative total of 15 minutes or more over a 24-hour period. The term “exposed” may be used synonymously with “close contact.”

Acceptable Tests

PCR or rapid antigen testing are acceptable testing methods.

Primary Series of COVID-19 Vaccine

2-dose series of an mRNA COVID-19 vaccine (Pfizer-BioNTech and Moderna) or a single dose of J&J dose

POSITIVE CASE ON CAMPUS

- If student or employee is onsite when the positive is confirmed, they will be isolated until they are able to go home. Parents will be contacted immediately.
- Positive case will be excluded from campus for the duration of the isolation period as required by CDPH.
- Contagious window will be determined by asking when symptoms first began, or if asymptomatic, when individual tested.
- If the positive case was onsite anytime in the 48-hour window before symptom onset, or before testing if asymptomatic through the time they were removed from the site, the school site will engage in group-approach to contact tracing.
- Deep cleaning will be arranged for any impacted class or workspace.
- All required notifications to impacted parents will be made via the Group-Tracing Approach.
- Positive case information will be provided to Kern County Public Health.
- School sites will work with employee and/or family to determine when they can return based on isolation/quarantine guidelines.

Group-Tracing Approach to Students Exposed to COVID-19

1. DJUHSD will notify students who spent more than a cumulative total of 15 minutes (within a 24-hour time) in a shared indoor airspace (e.g., classroom) with someone with COVID-19 during their period of infectiousness.
 - Notification will occur to "groups" of exposed students (e.g., classmates, teammates, cohorts, etc.) rather than contact tracing to identify individual "close contacts" (e.g., those within 6 feet).

- Notifications will be provided to all individuals considered exposed, including those who are vaccinated and/or recently infected.
 - For example, if a student in tenth grade is diagnosed with COVID-19, the school will notify groups with whom that student interacted as per the criteria above, such as those in the same classes, sports team, and/or other extracurricular cohorts.
 - A sample notification letter is available on your school's COVID-19 section.
2. Exposed students, regardless of COVID-19 vaccination status, should get tested for COVID-19 with at least one diagnostic test obtained within 3-5 days after last exposure, unless they had COVID-19 within the last 90 days. You may test your child with an at home rapid antigen test kit or at a testing site near you [clicking here to find a testing site near you](#) . Testing may also be completed with our medical health professionals upon request.
- Exposed students who had COVID-19 within the last 90 days should monitor for symptoms. If symptoms develop, they should isolate and get tested with an antigen test.
 - In the event of wide-scale and/or repeated exposures, broader (e.g., grade-wide or campus-wide) once weekly testing for COVID-19 may be considered until such time that exposure events become less frequent.
 - Any FDA-authorized antigen diagnostic test, PCR diagnostic test, or pooled PCR test is acceptable for evaluation of an individual's COVID-19 status. For individuals who have been recently infected (within the past 90 days), antigen testing is strongly recommended as PCR results may remain persistently positive and not be indicative of a new active infection. Repeat antigen testing and/or confirmatory molecular testing should be considered in individuals who receive a negative result with an antigen test but have symptoms specific for COVID-19 (such as loss of taste and smell).
3. Exposed students may continue to take part in all aspects of K-12 schooling, including sports and extracurricular activities, unless they develop symptoms or test positive for COVID-19. They should test as recommended in Section (2), report positive test results to the school, and follow other components of this guidance, including wearing masks as is strongly recommended.
- Exposed students who develop symptoms should see Section 4 of the K-12 Guidance.
 - <https://www.cdph.ca.gov/Programs/CID/DCDC/Pages/COVID-19/K-12-Guidance-2021-22-School-Year.aspx>
 - Exposed students who receive a positive test result should isolate in accordance with Section 10 of the K-12 Guidance.
 - <https://www.cdph.ca.gov/Programs/CID/DCDC/Pages/COVID-19/K-12-Guidance-2021-22-School-Year.aspx>

School-Based Extracurricular Activities

DJUHS will adhere to CDPH guidance relating to all extracurricular activities operated or supervised by our district, which include, but not limited to sports, band, chorus, and clubs.

Indoor mask use remains a critical layer in protecting against COVID-19 infection and transmission, including sports, music, and related activities. Accordingly:

- Masks are strongly recommended indoors at all times for teachers, referees, officials, coaches, and other support staff.
- Masks are strongly recommended indoors for all spectators and observers.
- Masks are strongly recommended indoors at all times when participants are not actively practicing, conditioning, competing, or performing. Masks are also strongly recommended indoors while on the sidelines, in team meetings, and within locker rooms and weight rooms.
- When actively practicing, conditioning, performing, or competing indoors, masks are strongly recommended by participants even during heavy exertion, as practicable.
- Individuals using instruments indoors that cannot be played with a mask (e.g., wind instruments) are strongly recommended to use bell coverings and maintain a minimum of 3 feet of physical distancing between participants. If masks are not worn (or bell covers are not used) due to heavy exertion, it is strongly recommended that individuals undergo screening testing at least once weekly, unless they had COVID-19 in the past 90 days. An FDA-authorized antigen test, PCR test, or pooled PCR test is acceptable for evaluation of an individual's COVID-19 status.

COMMUNICATION PLAN

The Human Resources Department along with School Nurses will notify Kern County Public Health immediately upon being informed of any positive COVID-19 diagnostic test result by an individual within school facilities or on school grounds, including students, faculty, staff, and visitors. Confidentiality will be maintained as required by federal and state law and regulations. The Human Resources Department and Site Nurses will follow direction from Kern County Public Health Department regarding cases and contacts. The Human Resources Department and Site Nurses will maintain communication systems that allow staff and families to self-report symptoms and receive prompt notifications of exposures and closures, while maintaining confidentiality, as required by FERPA and state law related to privacy of educational records.

STAFF TRAINING AND FAMILY EDUCATION

STAFF

- Faculty and staff will be trained in the deep importance of implementing every aspect of this reopening plan to hold the trust of our families and to protect everyone connected with the school
- The school administration will regularly evaluate compliance with this plan and document and correct any deficiencies identified. This will include improving systems and structures to ease implementation of these safety protocols
- The school will also have a designated staff COVID Coordinator (Assistant Principal of Discipline) for COVID concerns among faculty and staff
- Concerns related to COVID-19 will be directed to the District COVID Coordinator, Rene Ayon.

FAMILIES

The district will provide on-going communication/updates on all the relevant aspects of this safety plan. In addition, this plan with all its provisions will be posted on the district website for families to review. All families must sign and return the Student Return to School Affirmation Form.

TRAINING

The school sites will provide training prior to the return to campus to ensure that all staff and/or students understand the risks of COVID-19, precautions against infection and the districts procedures and guidelines related to the pandemic, as well as how to provide training for students. The teachers will provide student training as part of the orientation process for individual classes. Training will include:

- Faculty Responsibilities
 - Staff members will be trained on COVID-19 (Hand Washing, Coronavirus Awareness, Center for Disease Control (CDC): Guidelines for Making & Using Face Coverings, and Managing Stress and Anxiety)
- Parent Responsibilities
 - Daily screening of their students and contacting the school attendance office if their student is exhibiting symptoms at the following:
 - DHS: Laura Delira 720-4138 / Cindy Reyes 720-4123
 - CCHS: Luz Arceo 720-4779 / Gloria Herrera 720-4527
 - RFK: Maricela Lizarraga 720-5105 / Kimberly Sanchez 720-5112
 - VHS: Therese Truman 720-4188 / Diana Sotelo 720-4374
- Student Responsibilities
 - How to prevent spread of the infection
 - The importance of not coming to school if students have symptoms or if they have been exposed to someone with the virus or who is undergoing testing for the virus in the last 14 days
 - Cleaning Responsibilities
 - Social Norms and Respiratory/Health Etiquette
 - Handwashing requirements
 - How to properly wear a face covering

Your Safety is our Top Priority

We are taking extra precautions against COVID-19 to protect Students & Staff



ENHANCED DISINFECTION AND CLEANING

The Delano Joint Union High School District (DJUHSD) has developed a cleaning program based on CDE and state public health guidelines. Specifically, the district will be using cleaning products that are on the Environmental Protection Agency's list of approved disinfectants for use against SARS/CoV2 (COVID-19) and consistent with ventilation requirements, Healthy Schools Act requirements and Cal/OSHA and CDPH requirements.

- All students will have assigned seating each period to facilitate contact tracing
- Shared use of classroom materials, books and other items will be minimized for safety
- All high touch surfaces both inside and outside the classrooms will be cleaned daily
- Buses will also be cleaned and sanitized daily by transportation department
- The district has an on-hand inventory of cleaning supplies including disinfectant wipes, disinfectant spray and gloves
- Every evening all classrooms, restrooms and other facilities used by staff and students will undergo cleaning by trained custodial staff

ROOMS AND SURFACES

- Rooms will be cleaned daily, using cleaning agents recommended for use in schools against COVID-19. Common surfaces, such as door handles, light switches, sink handles, bathroom surfaces, desks, tables, and chairs, will be wiped down throughout the day

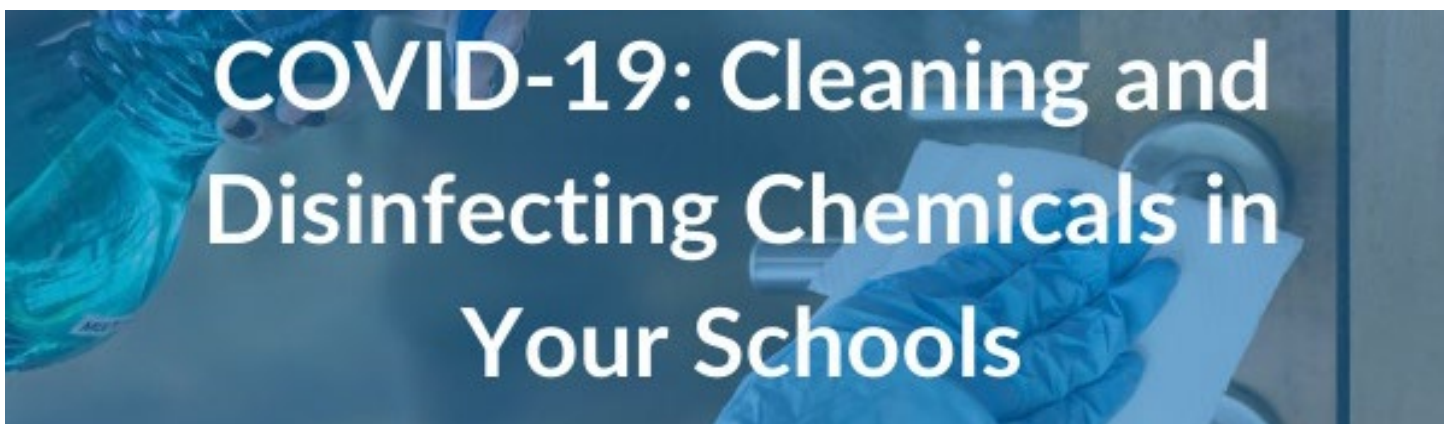
- Bathroom exhaust fans will run 24-hours a day to support bathroom ventilation. Hand sanitizer will be used in a supervised manner outside of the bathrooms, in addition to regular soap and water handwashing in the bathrooms
- The school will ensure there is always sufficient hand sanitizer, tissues, wipes, etc. for classroom and bathroom use, as well as cleaning supplies
- If the school provides transportation services, vehicles will be thoroughly cleaned and disinfected daily following industry-standard protocols, including common-touch surfaces. If drivers perform this cleaning, they will be provided with materials and PPE, including gloves

VENTILATION

- Rooms will be ventilated with fresh, external air to the extent permitted by daily/hourly environmental conditions. We will continuously monitor outside air quality.
- HVAC systems are using filters with a minimum efficiency reporting value (MERV) of at least 13
- If at any time the school believes ventilation is inadequate, students and employees will be sent home
- Any vehicles used for transportation will operate with windows lowered about 1 inch to maximize airflow during operation

FOOD AND WATER

- DJUHSD will maximize physical distance as much as possible while eating (especially indoors) and use additional spaces outside of the cafeteria for mealtime seating such as classrooms or the gymnasium. DJUHSD will arrange for eating outdoors as much as feasible.
- Surfaces that come in contact with food will be washed, rinsed, and sanitized before and after meals.
- The school has increased the non-contact water refill stations throughout the campus. Students can provide/bring a labeled reusable water bottle daily
- Any food preparation and delivery will be in accordance with industry health and hygiene standards, including use of gloves in addition to face coverings by personnel



SIGNAGE

- Clear signage will remind everyone to properly wash hands, mask wearing is strongly recommended, and

stay home when experiencing symptoms

OUTDOOR SPACES

- The district will maximize use of outdoor space weather and air quality permitting
- During windy and rainy weather, we hope to maintain our outdoor activities, and will ask students to come to school with appropriate clothing
- We also have awning space to provide shelter, and will always have adequate indoor facilities

SAFETY CONSIDERATIONS FOR STUDENTS WITH DISABILITIES

- Face covering are not recommended for anyone who has trouble breathing or is unconscious, incapacitated, or otherwise unable to remove the covering without assistance. Face shield with a cloth drape will be provided for those who are unable to wear face coverings for medical reasons. Per Cal/OSHA, considerations for face shields should include a cloth drape attached across the bottom and tucked into shirt
- School personnel will work closely with families of students who are immunocompromised regarding specific needs when returning to school

TRANSPORTATION

- The district will follow applicable CDC and CDPH guidelines when it comes to transporting students
- All passengers (including athletics and extra-curricular activities) will have assigned seating while on DJUHSD transportation
- The district will update transportation rules/protocols as additional guidance is released
- Busses will have extra masks for students who need them

FAMILY RESOURCES

The DJUHSD provides a wide variety of resources to help families with their academic and social emotional needs. Parents can access the following by visiting the district website or by calling and speaking to one of our staff members.

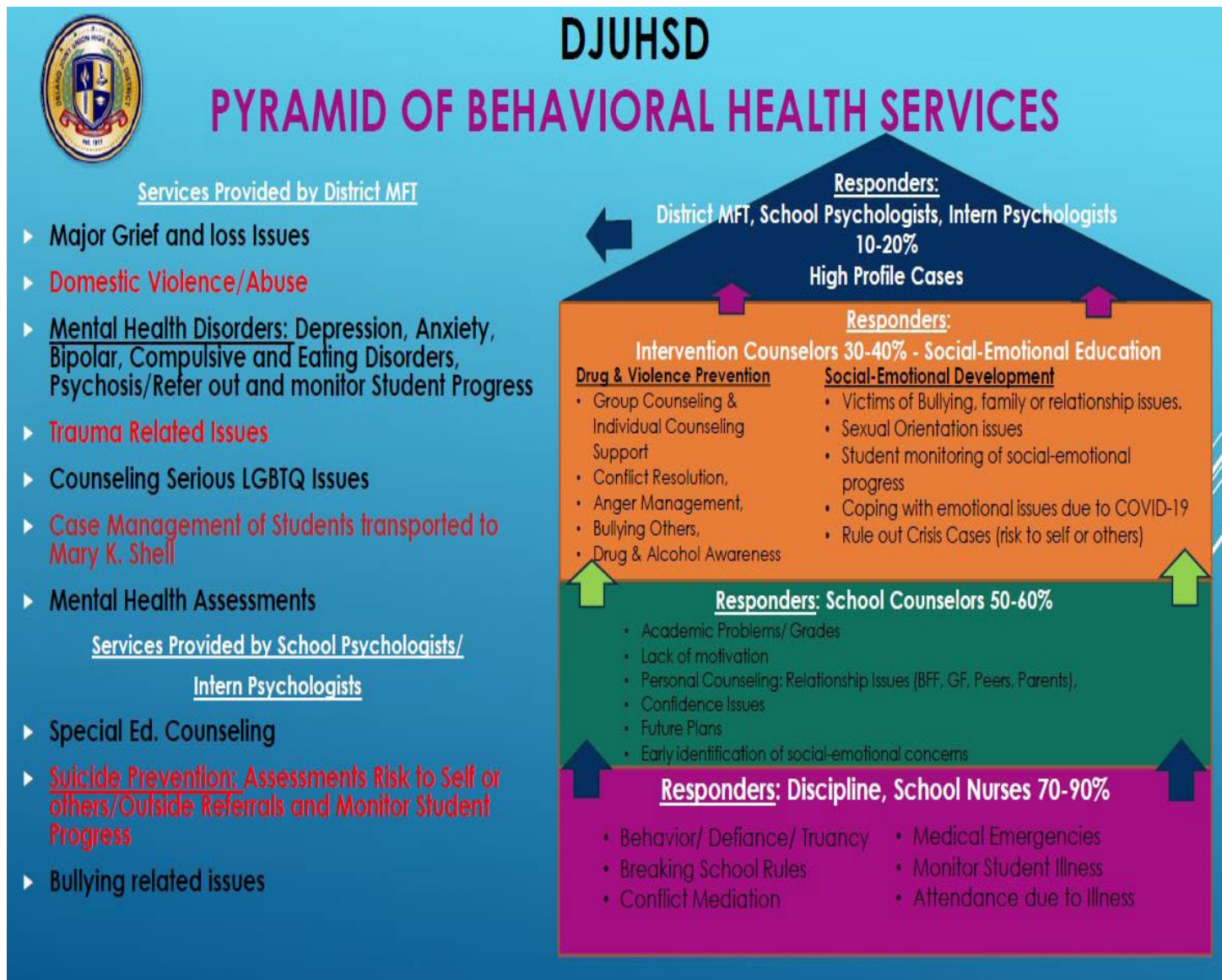
- COVID-19 awareness and training in spread prevention
- Assistance with enrollment, transfers, and all registration needs
- Support navigating Online Platforms, such as CANVAS, Microsoft Office, etc.
- Social Emotional Learning (SEL) services including counseling and referrals to outside agencies

Students and/or staff may have experienced family and or friend death/losses, income reductions from family members losing their jobs or other issues that have come to fruition during COVID-19 crisis and were unable to access counseling services.

- Students that have experienced loss or trauma during COVID-19 will need access to counseling services with follow-up care. Schools may have site-based counseling services. Considering COVID-

19, the California School Counselors released a comprehensive school crisis counseling website <https://covid19k12counseling.org/>

- It is important that students connect with emotional support services at their home school sites



ATTENDING TO THE SOCIAL EMOTIONAL WELL-BEING OF OUR STUDENTS WILL BE A TOP PRIORITY AS THEY RETURN TO SCHOOL.

District and school staff are committed to supporting students' social emotional wellness and offering resources to ensure students transition back to school smoothly. Support may include social emotional learning, building relationships, community building activities, and increased access to mental



health/wellness services. Families and schools will need to work together to check how students are feeling and assess their individual needs to provide the support our students need during these challenging times.

DELANO JOINT UNION HIGH SCHOOL DISTRICT				
COUNSELING SERVICES				
SITE	POSITION	NAME	PHONE	EMAIL
CCHS	SCHOOL NURSE	GABRIELLE ACUNA	661 720-4456	gacuna@djuhsd.org
CCHS	SCHOOL PSYCHOLOGIST	LIGIA RODARTE	661 720-4716	lrodarte@djuhsd.org
CCHS	MFT	LUZ MARIA GARAY	661 720 4130	lgaray@djuhsd.org
CCHS	INTERVENTION COUNSELOR	GUILLERMO SANTANA	661 720-4508	gsantana@djuhsd.org
CCHS	HEAD COUNSELOR	ELISEO GARZA	661 720-4503	egarza@djuhsd.org
CCHS	COUNSELOR	MARBELLA DELEON	661 720-4531	mdeleon@djuhsd.org
CCHS	COUNSELOR	ALFONSO HERNANDEZ	661 720-4784	ahernandez@djuhsd.org
CCHS	COUNSELOR	MARIA MENDOZA	661 720-4783	mmendoza@djuhsd.org
DHS	SCHOOL NURSE	MARISOL ESPINOZA	661 720-4128	mespinoza@djuhsd.org
DHS	SCHOOL PSYCHOLOGIST	RUDY ARELLANO	661 720-4521	rarellano@djuhsd.org
DHS	MFT	LUZ MARIA GARAY	661 720-4130	lgaray@djuhsd.org
DHS	INTERVENTION COUNSELOR	CHERYL GONZALEZ	661 720-4132	cgonzalez@djuhsd.org
DHS	HEAD COUNSELOR	SANDRA OROPEZA	661 720-4133	soropeza@djuhsd.org
DHS	COUNSELOR	IRMA GUERRERO	661 720-4135	iguerrero@djuhsd.org
DHS	COUNSELOR	SUSANA SALAZAR	661 720-4322	ssalazar@djuhsd.org
DHS	COUNSELOR	SHERIE WOLOSZ	661 720-4680	swolosz@djuhsd.org
RFK	SCHOOL NURSE	ANA HERNANDEZ	661 720-5296	ahernandez1@djuhsd.org
RFK	SCHOOL PSYCHOLOGIST	CLAUDIA RODRIGUEZ	661 720-4143	crodriguez@djuhsd.org
RFK	MFT	LUZ MARIA GARAY	661 720-4130	lgaray@djuhsd.org
RFK	INTERVENTION COUNSELOR	SARAH DEL RIO	661 720-5120	sdelrio@djuhsd.org
RFK	HEAD COUNSELOR	MARTHA MUNOZ	661 720-5106	mmamirez2@djuhsd.org
RFK	COUNSELOR	ART CANTU	661 720-5115	acantu@djuhsd.org
RFK	COUNSELOR	KATIE CARVER	661 720-4182	kcarver@djuhsd.org
RFK	COUNSELOR	NATALIE FRAGOSO	661 720-5114	nfragoso@djuhsd.org
VALLEY	SCHOOL NURSE	MARISOL ESPINOZA	661 720-4128	mespinoza@djuhsd.org
VALLEY	SCHOOL PSYCHOLOGIST	RUDY ARELLANO	661 720-4521	rarellano@djuhsd.org
VALLEY	MFT	LUZ MARIA GARAY	661 720-4130	lgaray@djuhsd.org
VALLEY	INTERVENTION COUNSELOR	ELISEO SANTIALLANO	661 720-4142	esantiallano@djuhsd.org